
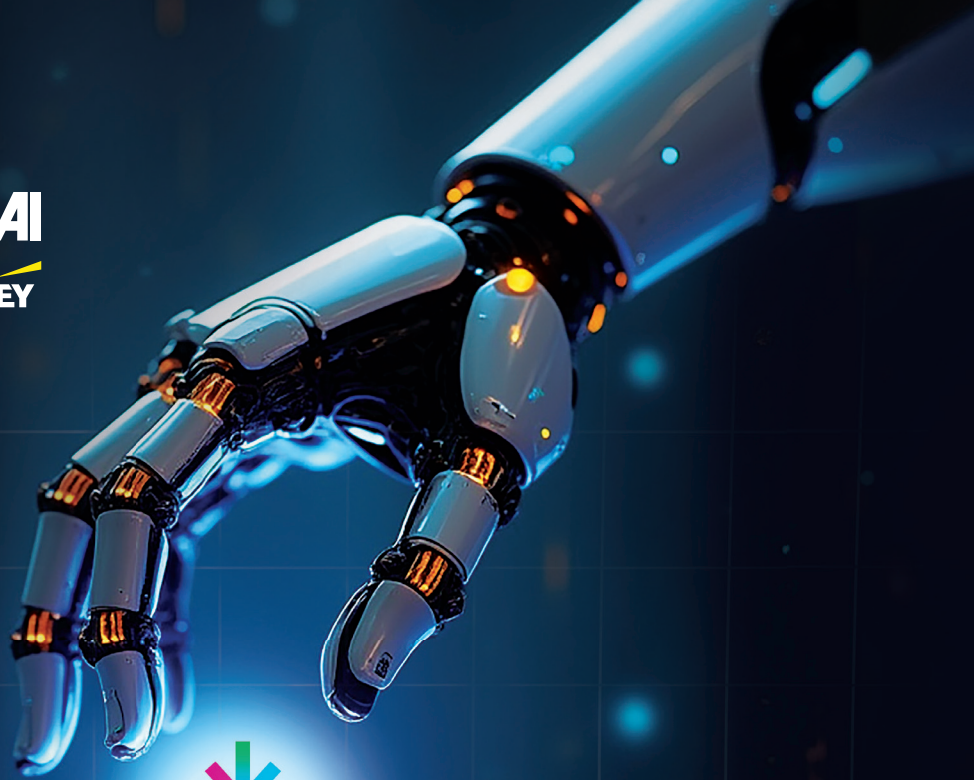


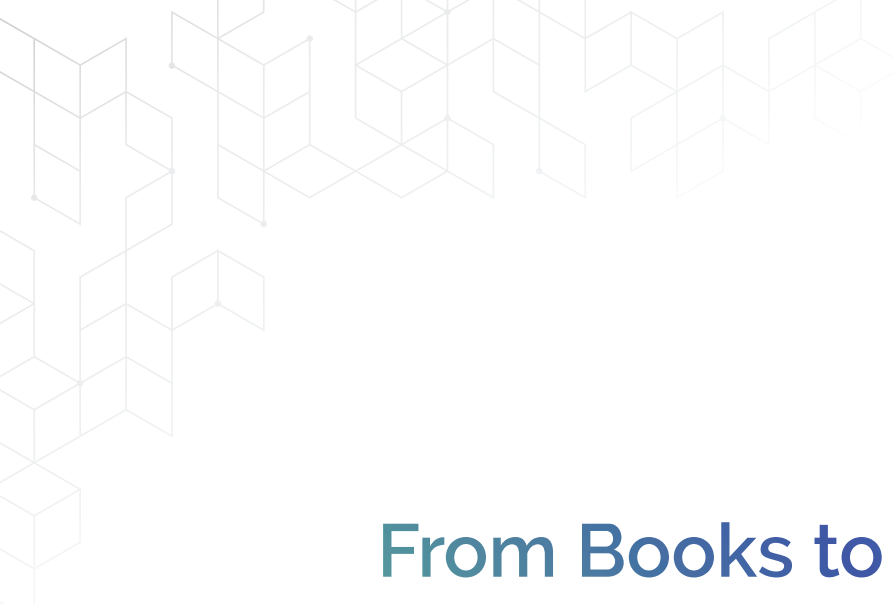


Technology for Tax Powered by  EY



# AI That Carries a Legacy of Trust.

Powered by Content You've Always Relied On.



# From Books to Bots—Our Promise Remains the Same. Reliable Information!

For over sixty years, Taxmann has stood beside India's legal and tax professionals—offering content that's not just reliable, but accountable. Across books, journals, and digital platforms, we've built something that professionals rely on every day—**Reliable Information.**

**Taxmann.AI carries that same promise into a new medium.**

It is built to serve the same purpose we've always stood for—delivering answers you can trust, drafts you can depend on, and tools that support the way you work.

This platform isn't here to make decisions for you.  
***It is here to ensure that every decision you make is backed by clarity and credibility.***

# What is Taxmann.AI?

AI-powered legal & tax research and drafting—built on Taxmann's trusted content backbone and powered by EY's technology for tax.

Taxmann.AI is an intelligent platform for legal and tax professionals—designed to simplify research, accelerate drafting, and bring structure to your everyday work relating to Income Tax & GST.

It merges the depth of Taxmann's verified tax and legal database with the power of deep research engine and responsiveness of AI built with EY's cutting-edge technology for Tax domain. It doesn't just respond—it understands, structures, and supports your journey.

It is AI—but it thinks like a professional. Because it was built for one.



## Ask Questions

Get responses grounded in law—not speculation



## Draft Smarter\*

Generate notices replies in structured formats



## Summarise Quickly\*

Get concise summaries of dense legal content



## Work Within MS Word\*

Access all tools inside your familiar workspace



## Cite with Confidence

Every response comes with verified information from Taxmann.com that you can rely on

\*Coming Soon

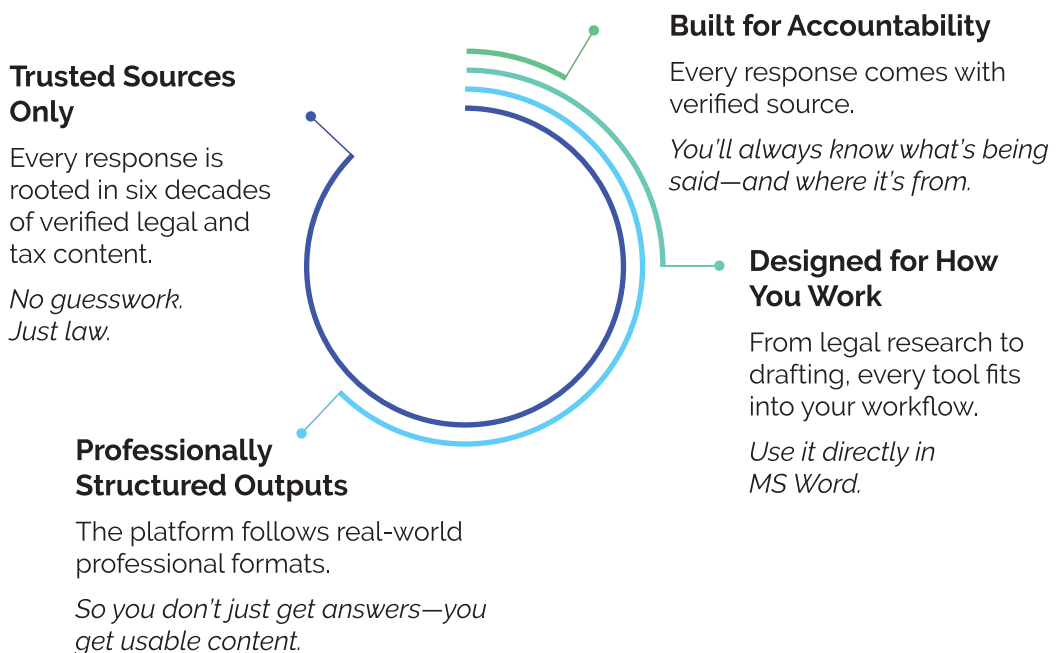
# Why Taxmann.AI?

Because professionals deserve more than just fast answers—they deserve verified ones.

In the world of tax and law, speed means nothing without trust. Professionals operate under pressure—but there's no room for imprecision. Most AI tools weren't built for this—they guess, skip sources, and sacrifice structure for speed.

## Taxmann.AI was built to change that.

It combines the authority of India's most trusted content with the agility of AI—bringing structure and clarity into your daily work.



# What You Can Do with Taxmann.AI?

Built Around You—the Way You Work.

From answering your toughest questions to drafting responses that hold up to scrutiny, Taxmann.AI is designed to support your entire workflow—whether you're exploring a complex provision, responding to a notice, or advising a client. With decades of trusted legal content at its core and intelligent tools built for reliability, structure and speed, it brings confidence, clarity and control to every step of your practice.



## Ask with Precision –

Pose any tax or legal query in plain language—get reliable and verified responses instantly.



## Draft with Structure\* –

Build professional-grade replies of notices, and documents—with clarity, legal backing, and format control.



## Tools That Work for You\* –

- **Library** – Every query, draft, and saved prompt lives in your personal Library.
- **Summariser** – Understand lengthy documents at a glance.
- **Matching Records** – Instantly find judgments, circulars, or provisions that relate to your query.
- **MS Word Plugin** – Access Taxmann.AI's features right within your familiar environment.

\*Coming Soon

# Ask Bot by Taxmann.AI

Your Personal Legal Research Assistant—Powered by AI.

Don't just search—have a conversation. **Ask Bot** is your always-on research assistant, trained on India's most trusted tax and legal database. Whether you're exploring a complex query or testing a hypothesis, Ask-Bot delivers precise, structured responses—grounded in verified sources and built for professional clarity.

## Conversational Research

Type your question naturally—Ask Bot interprets, clarifies, and responds. It understands the nuanced language of law and guides you through complex topics interactively.

## Dual Response Modes

Get answers in the format that suits your need—short or detailed. Taxmann.AI intelligently analyse your query to determine the ideal response length, but the choice is always yours. Whether you need a quick clarification or a comprehensive legal explanation, both formats are completely verified and ready for reference.

## Source-Backed Transparency

Every response is verifiable. Ask-Bot doesn't hallucinate—it shows you the exact sources used to derive the answer, from Taxmann's Acts, Rules, Circulars, Notifications, Case Laws, Expert Opinions or Commentaries

## Customisation That Fits You

Select filters to refine your results—by content type (statutes, case laws, etc.) or legal domain. The system even adapts to your user persona and practice style.

## Workflow Integration

Download responses directly in Word or PDF. Structured with headings and subpoints, the output is ready for internal memos, presentations, or case prep.

## Reliable. Transparent. Verified.

No hallucinations. No fabricated laws. ASK Bot is trained on Taxmann's entire legal ecosystem, ensuring every response is grounded in reality—not assumptions.

# Draft Bot by Taxmann.AI\*

Your Legal Drafting Assistant—Powered by AI.

When a notice lands or a response is due, time is tight—but quality can't slip.

**Draft Bot** helps you move from input to output seamlessly—validating procedural details, identifying legal and factual issues, and generating a structured, editable reply. It's not just fast—it's grounded in law and built for real-world use.



## Upload or Input—Your Way

Upload a notice or enter brief context—Draft-Bot reads it like a practitioner would. It detects key details, validates procedural elements, and sets up the foundation for a structured, professional draft.



## Built-In Notice Validation

Not all notices are valid. Draft-Bot checks for authority signatures, Document Identification Numbers (DIN), time limits, and procedural compliance—before you begin a reply.



## Strategic Issue Breakdown

Draft-Bot separates legal and factual issues automatically, structuring your reply as any experienced professional would—with clarity, flow, and logical sequencing.



## Draft Bot Built on Legal Grounding

Replies include applicable provisions, case laws, and administrative guidance—all presented in a format that's ready to refine or send.



## Collaborative & Editable

Want to add your own arguments? You can regenerate, add custom issues, or adjust tone with a click



## Smart Dashboard for Practice Management

Every draft is saved client-wise and can be organised by notice type or date. Reopen, edit, or download responses instantly—perfect for firms handling high volumes or repeat matters. Built on past work, adapt replies, and ensure consistency across similar cases.

\*Coming Soon



# What Else Can Taxmann.AI Do?\*

Smart Capabilities That Complete the Workflow.

Beyond Ask and Draft Bots, Taxmann.AI is equipped with intelligent features that simplify your day-to-day practice—helping you organise, summarise, match and integrate legal content with clarity and control. From saving time on repetitive research to refining documents inside your drafting environment, these built-in capabilities are designed to support every part of your professional workflow.

## **Library**

**Organise Your Research,  
Reuse What Works**

Every query, draft, and saved prompt exists in your personal Library. Track past work, access verified prompts, and revisit client-wise activities—so nothing gets lost, everything stays connected.

## **MS Word Plugin**

**Work Where You Already Do**

Conduct research, insert responses, and refine drafts directly inside Microsoft Word. Maintain formatting, avoid context-switching, and reduce copy-paste errors—all without leaving your document.

## **Summariser**

**Extract Meaning, Not Just Text**

Upload judgments, notices, or legal texts and get precise, contextual summaries. See key holdings, procedural steps, and implications—without missing the nuance.

## **Matching Records**

**Let the Law Find Itself**

Drop in any document, query, or draft—and Matching Records will surface similar case laws, rulings, and provisions. Even when the language is different, the logic aligns.

\*Coming Soon



# Built for Confidentiality | Security | Professional Ethics

Your Work. Your Data. Always Protected.

Taxmann.AI understands the responsibilities that come with legal and tax practices. Every query, document and draft are handled with strict confidentiality. Nothing is used to train public models and no data is shared across users or systems. The platform uses enterprise-grade encryption, internal access controls and isolated environments to ensure your work stays private, secure, and professionally protected—just as it should.



## No Data Sharing

Your drafts, questions, and documents are never used to train AI or shared across accounts.



## Enterprise-Grade Security

All data is stored using robust encryption protocols and institutional access standards.



## Private Workspaces

Client-wise activities, drafts, and queries remain strictly within your account.



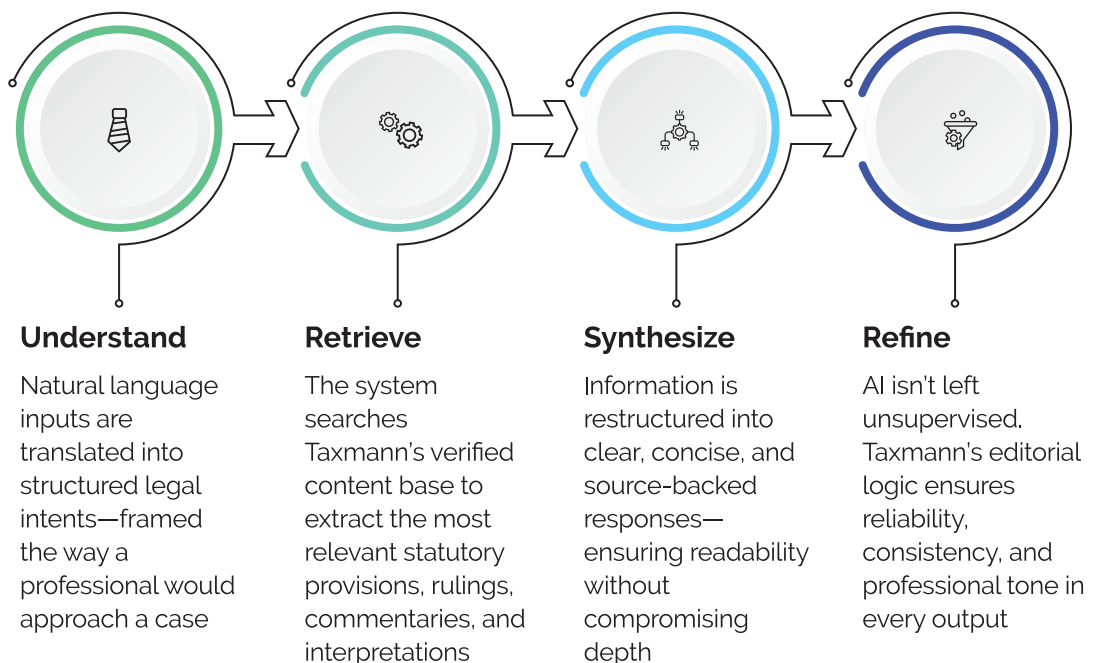
## Always Confidential

Feedback improves the platform—but never at the cost of your data's privacy.

# The Science Behind Taxmann.AI

Legal Precision | AI Efficiency—Seamlessly Combined.

Taxmann.AI is built to understand how legal professionals think—and how legal systems work. Every response is powered by a refined pipeline that mimics the reasoning of seasoned practitioners, not just machine output.



That's why when you use Taxmann.AI, you don't just get AI responses—you get legal-grade answers, grounded in the authority of India's most trusted content ecosystem.

# FAQs of Taxmann.AI

## Getting Started

**1. What is Taxmann.AI?**

Taxmann.AI is an intelligent, AI-driven platform specifically designed for legal and tax professionals, providing efficient, reliable, and structured solutions for research and drafting using verified legal content.

**2. Who can benefit from Taxmann.AI?**

Taxmann.AI serves legal and tax professionals, including lawyers, CAs, CS, corporate legal departments, revenue officers, tax advisors, judicial members, and more, seeking precise, reliable, and quick assistance.

**3. Is Taxmann.AI the same as Taxmann.com?**

No. Taxmann.AI is an advanced, AI-driven platform offering interactive, conversational tools. It leverages Taxmann.com's authoritative, decades-rich database of legal and tax content, extending its legacy into intelligent solutions designed specifically for legal and tax professionals.

## Bots & Tools

**1. What are the key bots available in Taxmann.AI?**

Taxmann.AI currently includes:

- Ask Bot (Available) – An AI-driven conversational assistant for structured and precise legal and tax research.
- Draft Bot (Coming Soon) – Automated drafting assistant generating comprehensive responses to tax and legal notices.

**2. What supporting tools are planned?**

Taxmann.AI will soon come up with:

- Summariser – AI-powered tool summarising extensive documents.
- Matching Records – Identifies relevant and similar legal documents and precedents.
- MS Word Integration – Allows seamless research and drafting directly within Microsoft Word.



## Using Ask Bot

### 1. How do I phrase my questions to Ask Bot for the best results?

Clearly and specifically describing your query, context, and facts in natural language is sufficient to receive a well-researched and valid response.

### 2. Can I ask multiple follow-up questions?

Yes. Ask Bot supports conversational continuity, allowing multiple follow-up questions within a single conversation thread.

### 3. What type of legal content does Ask Bot cover?

Ask Bot addresses your every query relating to Income Tax and GST matters. The responses are generated based on all content available on taxmann.com, including statutory provisions, case laws, circulars, notifications, commentaries, Practice content, etc.

### 4. Can Ask Bot replace professional legal advice?

No. Ask Bot assists with legal research by providing structured and verified information, but it should not be used as a substitute for professional judgment or legal advice.

### 5. Do responses include citations or references?

Yes. Every response is structured and includes hyperlinks to primary and secondary sources, as well as citations for instant verification.

### 6. Can I access my previous conversations?

Yes. During the active trial or subscription, your queries remain accessible for further interactions; however, they are read-only after the trial or subscription expires.

### 7. What sources does Taxmann.AI use to answer my queries?

Taxmann.AI generates responses exclusively from Taxmann's authoritative databases, including Acts, Rules, Circulars, Notifications, Case Laws, Treaties, Commentaries, Books, Tariff, Practice Content and Articles available on Taxmann.com.

### 8. Are the source links provided in responses accessible directly?

Yes, provided you have an active subscription to the respective Taxmann.com module. For instance, if a source link relates to Taxmann.com | Research – Income Tax module, you'll need a subscription to that specific module to access the detailed content.

## Comparison with Other AI Tools

### 1. I already subscribe to other AI tools. How is Taxmann.AI different?

Taxmann.AI is specifically tailored for legal and tax professionals, built on six decades of verified, professional-grade content from Taxmann. Unlike generic AI tools, Taxmann.AI provides structured, authoritative, and source-verified responses tailored explicitly to legal and tax scenarios, ensuring reliability, context-awareness, no hallucination and relevance to Indian statutes and judicial interpretations.

## Free Trial & Waitlist

**1. How does the free trial work?**

The free trial provides complimentary access to explore our AI-powered features. Once the trial ends, the chat switches to read-only mode.

**2. Why am I placed on a waitlist for the trial?**

To ensure optimal platform stability and performance, trial slots are limited. You will be notified when your access becomes available.

**3. Can I extend my trial if I need more time?**

In some instances, yes. You may request an extension, subject to approval.

**4. What if I didn't use all my queries within the trial period?**

The free trial is time-bound and cannot be extended. Any unused access will automatically expire once the trial period ends.

**5. Can I get another free trial using a different email or phone number?**

No. Each user is limited to one free trial. Duplicate registrations are flagged and blocked.

**6. Can I update my email or phone after activating the trial?**

No. Trial access is tied to your verified credentials. Contact support if corrections are necessary.

## Technical & Device-related

**1. Is Taxmann.AI accessible on mobile devices or tablets?**

Yes. The platform is web-based and fully compatible with desktops, tablets, and smartphones.

**2. How many devices can access my account simultaneously?**

You can log in to your account from up to three devices, but you can only actively access the platform from one device at a time. This approach prevents unauthorised account sharing and ensures your data remains secure.

**3. Is special training required to use Taxmann.AI?**

No special training is necessary. Taxmann.AI is designed to be intuitive and user-friendly. Still, if needed, customer support is readily available.

**4. Will Taxmann.AI integrate with other software I use?**

Future releases will include integration with Microsoft Word for seamless research and drafting.



## Data Privacy & Security

### 1. How is my data protected on Taxmann.AI?

Your data remains confidential, protected by enterprise-grade encryption, stringent access controls, and secured environments, ensuring adherence to legal industry privacy standards.

### 2. Is my data shared or used to train AI models?

No. Your data is private, not shared with others, and is not used to train AI models.

## Account & Subscription

### 1. Can my team use a single account?

No. Accounts are for individual use only. Contact our sales team for team or corporate subscription plans.

### 2. What happens after my trial expires?

Your account switches to read-only mode. You'll be guided to explore available subscription plans to regain full functionality.

## Regional & Language Support

### 1. Does Taxmann.AI support languages other than English?

Currently, Taxmann.AI only supports queries and responses in English.

### 2. Can I use Taxmann.AI for international jurisdictions?

Currently, the platform is specifically designed for the Indian legal and tax systems.

## Support & Feedback

### 1. How do I contact support?

Support is available via email and phone. Our dedicated support team ensures prompt and effective assistance.

### 2. Can I suggest new features or improvements?

Yes, we encourage users to submit suggestions and feedback through the feedback option on the platform or by contacting our support team directly.

# About Us

## A New Chapter in Legal Excellence.

Taxmann.AI comes from the house of Taxmann—a name trusted by generations of legal professionals in India. With six decades of content credibility and an unwavering focus on precision, we created Taxmann AI to bring intelligent legal assistance to your fingertips—rooted in source, designed for daily practice

### **Our Mission**

At Taxmann.AI, our mission is to simplify how professionals work with tax and legal content—making research faster, drafting more structured, and every output grounded in verified sources.

This stems from a legacy built over six decades at Taxmann, where trust, reliability and depth of content have always been paramount. Taxmann.AI extends that principle into a modern, intelligent platform designed to deliver clarity at speed.

We know the weight of your work—the deadlines, the precision, the accountability. That is why this platform is built to surface what matters, handle what repeats, and support your journey every step of the way.

By merging the authority of Taxmann's content with the agility of AI, our mission is clear – to help professionals work smarter—without ever compromising on credibility.

### **Our Vision**

Our vision is simple yet ambitious—to make AI not just intelligent but dependable. We are building a future where legal and tax professionals can rely on Taxmann.AI with the same confidence they've always had in Taxmann's content.

By infusing six decades of editorial credibility into modern legal technology, Taxmann.AI is an efficient tool that reflects professional values. We believe that AI should deliver fast, structured results—and it also should uphold the clarity, discipline, and integrity that legal practice demands.

### **Our Beliefs**

We stand for clarity, not clutter.

We stand for credibility, not shortcuts.

We stand for context, not guesswork.

We stand for privacy, not compromise.

We stand with professionals—every step of the way.



Visit the Website



# Sales & Marketing

## Delhi:

59/32, New Rohtak Road,  
New Delhi – 110005, India

Phone: +91-11-45562255

Email: sales@taxmann.ai

## Mumbai:

35 Bodke Building, Ground Floor, M.G. Road,  
Mulund (West), Opp. Mulund Railway Station,  
Mumbai – 400080, Maharashtra, India

Phone: +91-9321497120

Email: sales.mumbai@taxmann.ai

## Ahmedabad:

7, Abhinav Arcade, Ground Floor,  
Pritam Nagar Paldi, Ahmedabad – 380007,  
Gujarat, India

Phone: +91-9714105772

Email: sales.ahmedabad@taxmann.ai

## Hyderabad:

4-1-369, Indralok Commercial Complex,  
Shop No. 15/1 – Ground Floor, Reddy Hostel Lane,  
Abids, Hyderabad – 500001, Telangana, India

Phone: +91-9391041461

Email: sales.hyderabad@taxmann.ai

## Pune:

Office No. 14, First Floor, Prestige Point, 283 Shukrwar Peth, Bajirao Road, Opp. Chinchechi  
Talim, Pune – 411002, Maharashtra, India

Phone: +91-9029504582

Email: sales.pune@taxmann.ai

## Northern Region

- ▶ **Delhi:** +91-11-45562255 | sales@taxmann.ai
- ▶ Niju Sreedharan: +91-9810436653 | niju.sreedharan@taxmann.ai
- ▶ Santosh Bhardwaj: +91-9312277940 | santosh.bhardwaj@taxmann.ai
- ▶ Simran Kaur: +91-9818407874 | simran.kaur@taxmann.ai
- ▶ Vishal Gambhir: +91-9711201502 | vishal.gambhir@taxmann.ai
- ▶ Gaurav Walia: +91-9911743555 | gaurav.walia@taxmann.ai
- ▶ Aakash Bhardwaj: +91-9871912862 | aakash.bhardwaj@taxmann.ai

## Southern Region

- ▶ **Bengaluru:** +91-9321497120 | sales.bangalore@taxmann.ai
- ▶ Monali Maduskar: +91-9321497120 | monali.maduskar@taxmann.ai
- ▶ Babu Magdee: +91-9986950066 | babu.magdee@taxmann.ai
- ▶ Vasantha Jayprakash: +91-7045453845 | vasantha.jayprakash@taxmann.ai
- ▶ **Hyderabad:** +91-9391041461 | sales.hyderabad@taxmann.ai
- ▶ Kiran P: +91-8341741461 | kiran.p@taxmann.ai
- ▶ **Chennai:** +91-8939009948 | sales.chennai@taxmann.ai
- ▶ Ziauddin Shiekh: +91-9324444746 | ziauddin.shiekh@taxmann.ai
- ▶ **Kochi:** +91-8939009948 | sales.kochi@taxmann.ai
- ▶ Mahesh Gawali: +91-7045453849 | mahesh.gawali@taxmann.ai

## Western Region

- ▶ **Mumbai:** +91-9321497120 | sales.mumbai@taxmann.ai
- ▶ Nilesh Bhanushali: +91-9820326673 | nilesh.bhanushali@taxmann.ai
- ▶ Monali Maduskar: +91-9321497120 | monali.maduskar@taxmann.ai
- ▶ Amit Ahirwal: +91-9819549459 | amit.ahirwal@taxmann.ai
- ▶ Sameer Rajivale: +91-7045453852 | sameer.rajivale@taxmann.ai
- ▶ **Pune:** +91-9029504582 | sales.pune@taxmann.ai
- ▶ Deepak Baeet: +91-9822411811 | deepak.baeet@taxmann.ai
- ▶ **Ahmedabad:** +91-9714105772 | sales.ahmedabad@taxmann.ai
- ▶ B.Durgaprasad: +91-9322293945 | b.durgaprasad@taxmann.ai
- ▶ Moiz Patel: +91-9714105771 | moiz.patel@taxmann.ai
- ▶ **GOA:** +91-9222771891 | sales.goa@taxmann.ai
- ▶ Sameer Rajivale: +91-7045453852 | sameer.rajivale@taxmann.ai
- ▶ Rakesh Suthar: +91-7045453851 | rakesh.suthar@taxmann.ai

## Eastern Region

- ▶ **Kolkata:** +91-9830071313 | sales.kolkata@taxmann.ai
- ▶ Siddhartha Bepari: +91-9870300753 | siddhartha.bepari@taxmann.ai